

 **PERRICOOTA**
STATION *Events*



Weddings & Functions
ECHUCA  MOAMA

Perricoota Station offers complete wedding packages, individually designed to suit your special day.

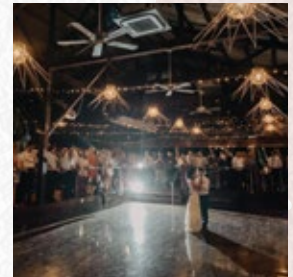
ceremony

Perricoota Station is one of The Murray's grandest wedding venues. Utilise the manicured lawns of the Pericoota homestead or a stunning riverside location with full Murray River frontage as you say "I do".



reception

Your reception venue is only steps away. The historic Packing Shed comfortably seats up to 200 guests and is mere metres from the waterfront. From the large deck, your guests will have access to stunning views out over the river and the surrounding Australian bushland.



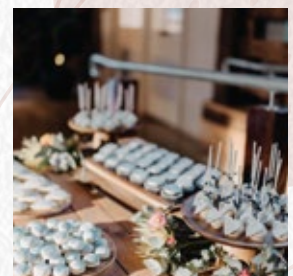
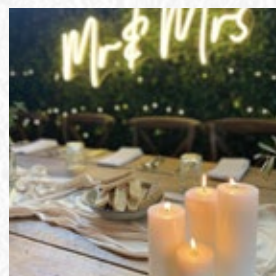
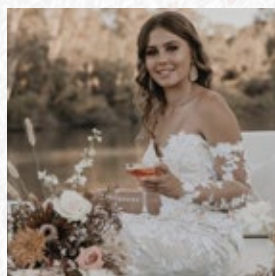
location

Your wedding photographer is spoiled for choice at Perricoota Station. Potential backdrops include the Murray River with iconic redgums, country panoramas and the many period-style outbuildings around Perricoota.



catering

Couples have their choice of a cocktail-style or sit down reception. Our menu is a blend of Australian and European cuisines, using quality ingredients and catering for dietary preferences where possible.





THE QUARTERS

18 8

The Quarters are original buildings near The Packing Shed that have been restored to highlight their heritage features. Bespoke interiors throughout all eight bedrooms reflect the colours and textures of the Murray River, giving guests a tranquil and luxury riverside retreat.



Valencia ROOM

SLEEPS 2

The ultimate riverside retreat. Once the main office for the Station, the Valencia Room has impressive 12 foot ceilings, exposed original brick walls, a king size bed, TV and restored heritage, decorative brick fireplace. The ensuite features a double shower and vanity with Australian made designer concrete basins and bathtub.

Executive ROOM

SLEEPS 2



Previously the laundry for the workers accommodation in the late 1800s, The Executive has been carefully restored and now refreshed includes a queen size bed, TV and generous wardrobes. The large ensuite features a generous bath and vanity with Australian made designer concrete basin and shower.



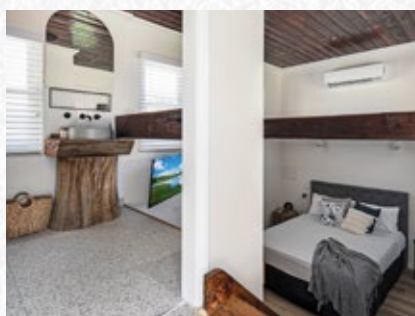
Family ROOM

SLEEPS 4

The Family Room is our largest room with plenty of space for parents and little ones. The main room features a queen size bed, TV, a dining table and kitchenette. The adjoining ensuite features a vanity with Australian made designer concrete basin, shower and ample storage and bench space. An adjoining room features twin single beds.

THE Cellar

SLEEPS 2



Once where the food stores were kept for workers in the 1800s, The Cellar is split across two levels with original wooden stairs down to the bedroom with queen size bed, TV and kitchenette. The mezzanine ensuite features a vanity with Australian made designer concrete basin atop the original wooden block found in the cellar and a shower.

Queen ROOM

SLEEPS 2



3 x Queen Rooms available

Our queen rooms feature premium fixtures for a relaxing getaway by the Murray River. With a queen size bed, TV and kitchenette providing a mini-fridge, kettle, toaster, microwave, glassware and crockery. The ensuite features a vanity with Australian made designer concrete basin and shower.



Queen TWIN

SLEEPS 2

Our queen rooms feature premium fixtures for a relaxing getaway by the Murray River. With a queen size bed that can be converted to a twin singles on request, TV and kitchenette providing a mini-fridge, toaster, kettle, microwave, glassware and crockery. The ensuite features a vanity with Australian made designer concrete basin and shower.



WATSON'S HOUSE



Our renovated five bedroom, two bathroom, stylish 1900's art deco homestead is situated 400m from the Murray River and The Packing Shed. Watson's House sleeps 10-12 people within three very large bedrooms with queen beds, two bedrooms with doubles and single beds above. Relax in the spacious open plan lounge and enjoy the dining & kitchen areas. The large entertaining deck also has a dining table complete with TV and BBQ.

